

FORM No. 1.

	C	D	N	S	E	W
North	36	36-00	36-00			
S. 88 W.	29		1.01			28.98
North	98	98.00				
N. 72° 45' E.	74	20.71			71.04	
N. 66 E.	114	46.37			104.10	
S. 6 E.	45		44.75		4.70	
South	147		147.00			
S. 88 W.	154		5.38			153.91

D
99.94
58.97
153.91

L
3.49
189
538

71.0
104.1
4.7
179.8

28.9
153.9
182.8
179.8
362.6
181.3

447
147.0
5.3
197.0

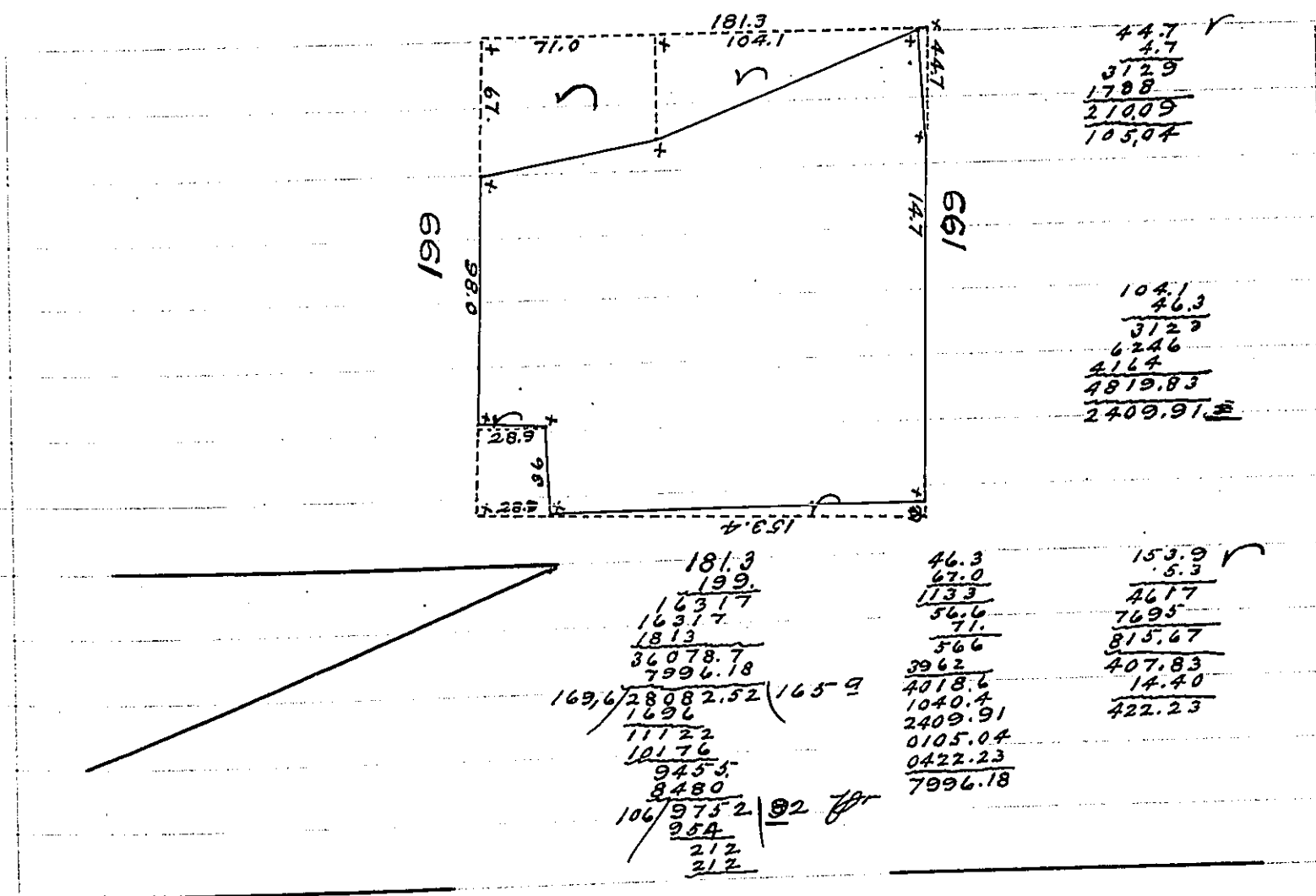
~~20.71
26.37
69.98~~

And^w Wilson 201.08 198.14 179.84 182.89

ellllll

289
36
1734
867
1040.4

~~67
98
36
201
197
398
99~~



IN TESTIMONY that the above is a copy of the original remaining on file in the Department of Internal Affairs of Pennsylvania, made conformably to an Act of Assembly approved the 16th day of February, 1833, I have hereunto set my Hand and caused the Seal of said Department to be affixed at Harrisburg, this fourteenth day of July 1910

Henry Horck
Secretary of Internal Affairs.